



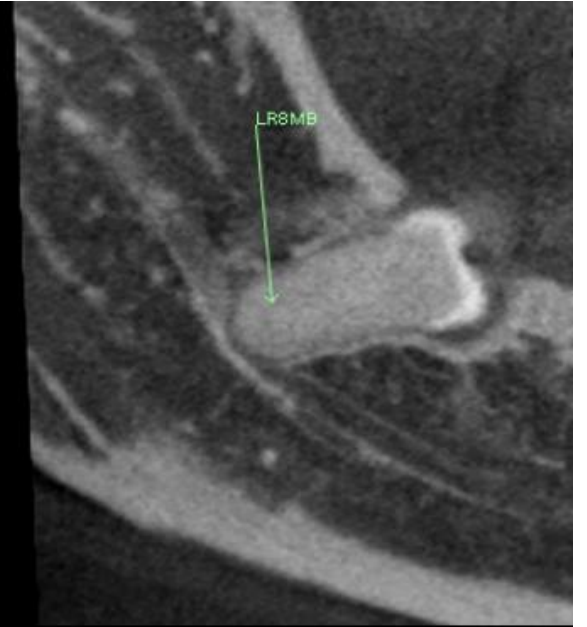
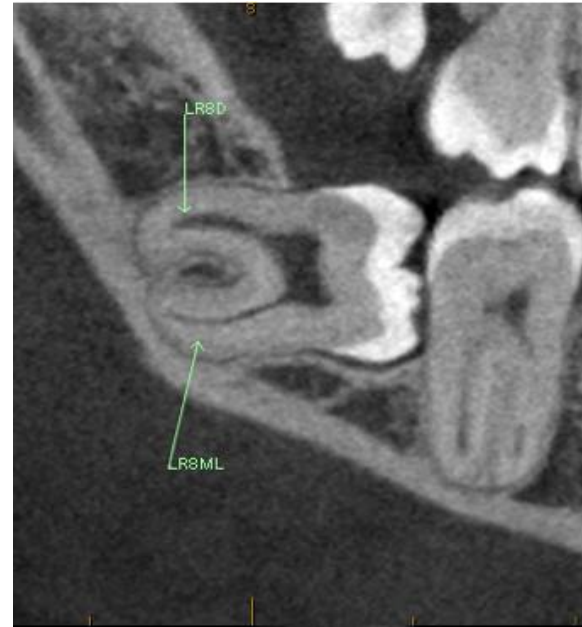
Georgina Harvey, Co-Founder

EXECUTIVE SUMMARY



Dental Reporting AI is a medical software company that provides a suite of programs designed to report dental impacted teeth utilising machine learning.

Our company possesses websites, trademarks, branding, programming code and intellectual property. We are wholly UK-owned, based, and operated, adhering to all regulatory frameworks.





OUR OBJECTIVE

To increase the efficiency of dental CBCT* reporting and deliver high-quality, detailed, and actionable reports at scale.

Simon Harvey (Co-Founder)
Consultant Dental and Maxillofacial Radiologist
MA (law), BDS, DDMFR RCR, MFDS RCS

*Cone Beam Computed Tomography

THE SITUATION

- Increasing clinical demand for imaging of impacted teeth
- Evolving legal precedent may create scanning requirement
- Turn Around Time (TAT) backlogs at current volume
- Limited Specialist Capacity
- Inefficient Reporting Processes and Technological Limitations



UL3

59.3° (1

UL4

OUR SOLUTION

Standardised Reporting Assistant



- Click-to-text Reporting Assistant
- Already developed and in Beta phase
- 30% faster than VR
- No errors vs. VR
- Silent, secure.
- Consultant DMFR training the dataset
- Class 1 medical device

Automated Key Image Selection



- Innovative and proprietary algorithm
- Produces key images direct from DICOM dataset.
- Able to be manipulated, annotated and verified by the radiologist within PACS system.
- Report crafted using Report Wizard(TM)
- Class 1 medical device

WE ARE UNIQUE

- i. Beyond Simple Segmentation
- ii. UK Built, Supported and Reported
- iii. CBCT Focussed
- iv. Designed by a Consultant Dental Radiology Specialist.
- v. Unique 'Earn-as-it-learns' Approach

